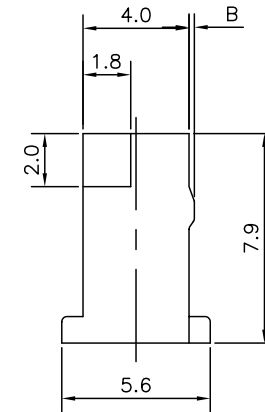
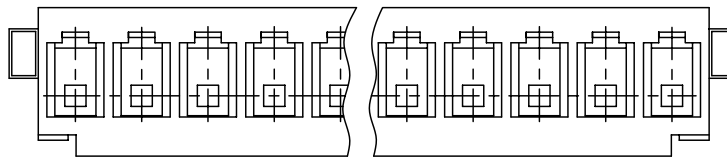
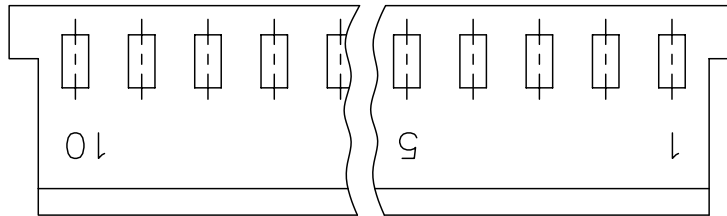
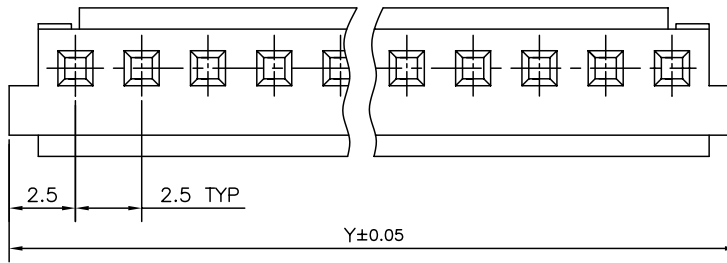


20	14	67096-058	0.05	37.5
19	20	67096-020	0.05	52.5
18	19	67096-019	0.05	50.0
17	18	67096-018	0.05	47.5
16	17	67096-017	0.05	45.0
15	16	67096-016	0.05	42.5
14	15	67096-015	0.05	40.0
13	14	67096-014	0.2	37.5
12	13	67096-013	0.2	35.0
11	12	67096-012	0.2	32.5
10	11	67096-011	0.2	30.0
9	10	67096-010	0.2	27.5
8	9	67096-009	0.2	25.0
7	8	67096-008	0.2	22.5
6	7	67096-007	0.2	20.0
5	6	67096-006	0.2	17.5
4	5	67096-005	0.3	15.0
3	4	67096-004	0.3	12.5
2	3	67096-003	0.3	10.0
1	2	67096-002	0.3	7.5
SL.No.	POSITION	PARTNUMBER	B	Y



NOTES:-

- 1.This Products meet European Union Directives and other country Regulations as described in GS-22-008.
- 2."LF" Suffix to Product number for Rohs compatible/lead free version
3. Parts with and without "LF" suffix are form-fit and functionally identical. "LF" Suffix provided for part number standardization of part that meets Rohs requirements.
4. Lead Free or ROHS Directive labelling to be provided as per GS-14-920

NOTE:

- FLASH SPECIFICATION**
- OUTSIDE :0.3 MAX
 - PIN HOLE :0.15 MAX
 - LOCKING FEATURE :0.15 MAX

mat'l. code		SEE NOTE 4		surface ISO 1302 ✓		tolerance ISO 406 ISO 1101		projection		product family RELIMATE	
ltr		ecn no		dr		date		tolerances unless otherwise specified		title	
L		106-0123		HVN		2006/07/20		±0.13		RELIMATE HOUSING	
				angles		linear		MM			
				0°±2°				scale -			
				dr		MINI K VANDANATH		2003/04/14		dwg no	
				enr		HIRAN V N		2003/04/14		sheet 1 of 1	
				chr		HIRAN V N		2006/07/20		size	
				appd		HIRAN V N		2006/07/20		A3	
sheet index		revision sheet		L		1		FCJ		67096	
								type		Product Customer Drawing	